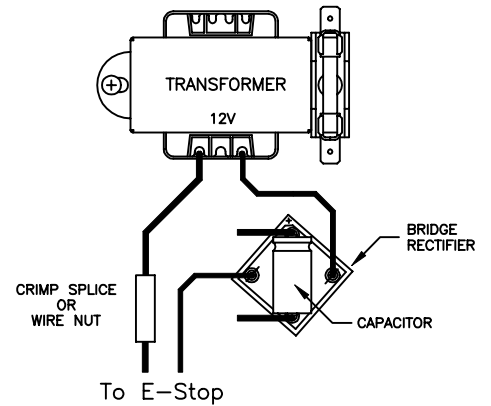
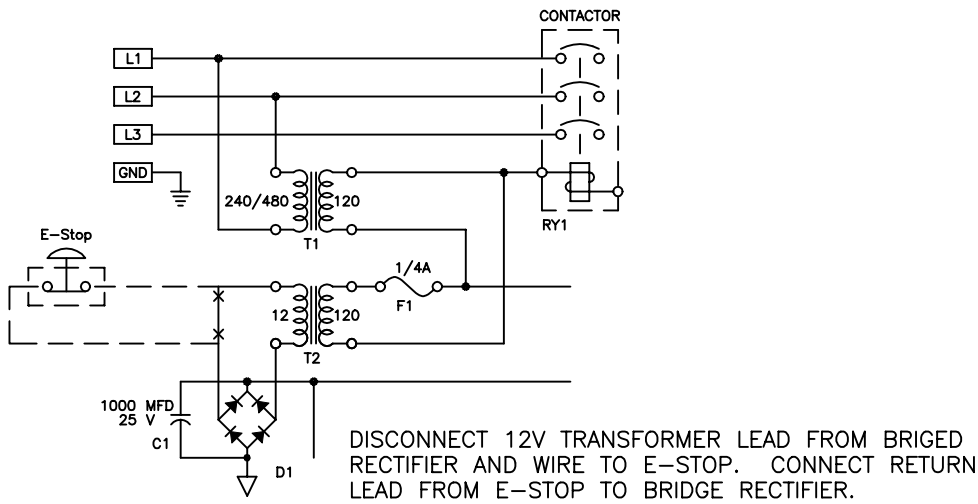
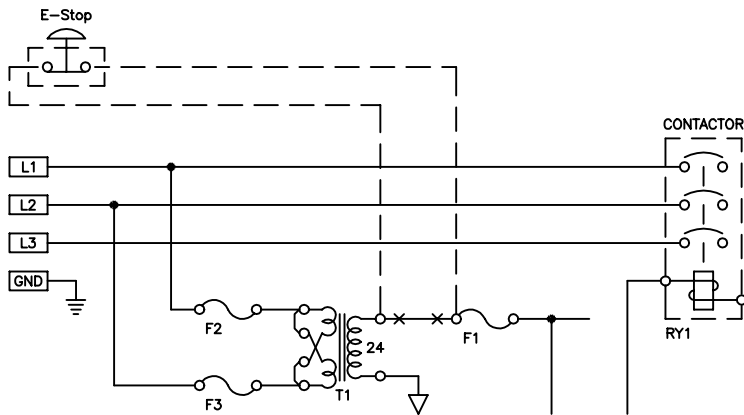


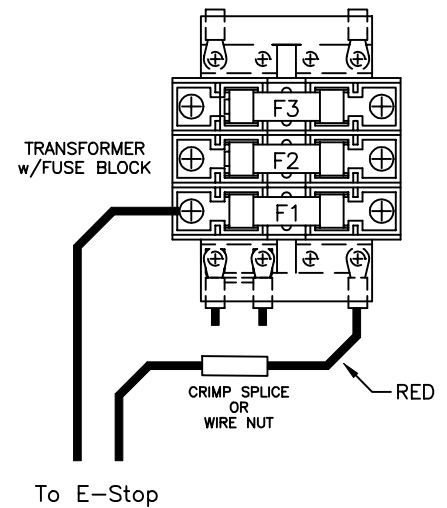
SS-301 (Vynckier Version)



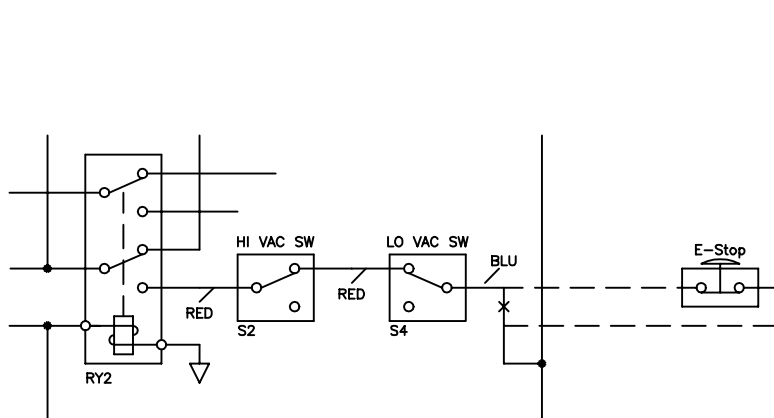
SS-301-G1 and G2 (without AutoStart)



DISCONNECT RED LEAD FROM F1 OF FUSE BLOCK AND WIRE TO E-STOP. CONNECT RETURN LEAD FROM E-STOP TO F1 OF FUSE BLOCK.



SS-301-G1 and G2 (with or without AutoStart)



DISCONNECT BLUE LEAD FROM S4 (LOW VAC SWITCH) AND WIRE TO E-STOP. CONNECT RETURN LEAD FROM E-STOP TO S4.

